



Our Newsletter
Spring Term 2
2026



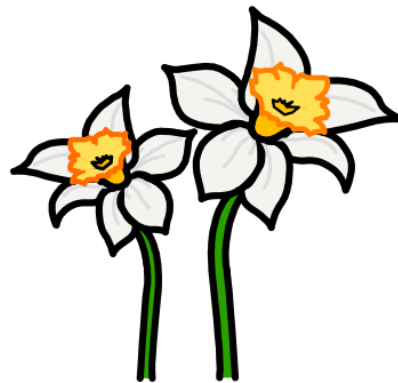
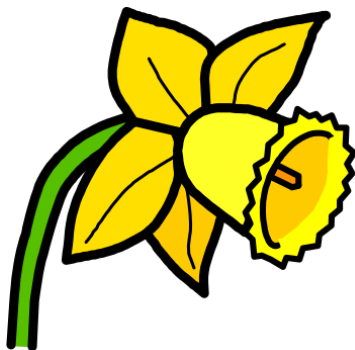


BOSTON
NURSERY SCHOOL



Dear Families,

I can't believe how quickly the time is going again this year. We have been so busy improving our school grounds, resources and gardens which I am so excited to share with you . I love 'Spring', and it makes me happy every morning to see the glorious daffodils that Yajat's and Haka's mums from Tawny Owls helped me plant in the Autumn. They look so beautiful and inviting for all our families to see. Thank you both so much your actions have made such a difference to our school. They were all purchased with a discount from Boston Seeds in Kirton.



We are delighted to welcome so many families to our school again this term. Preparing for this 'season of new beginnings and new life', is such a pleasure and I want to share with you the things that are happening and have been happening this term.

Best wishes,

Ella

Head of School



Padlet for all Newcomers



I have made a Padlet for all new families to look at so you are aware of different groups and activities that you can take your children to in Boston. Most of these are free. Please follow the link below to have a look.

[New Families to Boston](#)

Herbs of the Months

So far this year the children have enjoyed experiencing and cooking with the Rosemary in January, Thyme in February and Chives in March. The classes have been smelling, cooking with and tasting these herbs. Please share any recipes that you may have and use with these herbs. We would love to make a book!

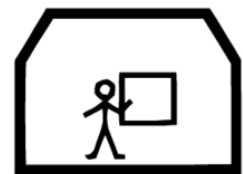


Rainbow Flower Garden

As you have probably seen we have an amazing new wall in the Tawny Owls Garden which has been painted by James and Brendan from Image Skool. They used the designs that the children made to create a 'Rainbow Flower Garden'. A name chosen by the children themselves



School Admissions



The School Admissions Portal is now open and **closed**. **If you have not applied for a school place yet the Portal will reopen on the 16th of April 2026 for late admissions.** Tawny Owl parents now need to apply for a primary school place for September 2026. Please visit the website [Apply for a school – Applying to primary or junior schools - Lincolnshire County Council](#)

If you would like any support please with your application please come to the school office.

Incredible Years

Well done to the parents that are attending this Programme at Fishtoft Road Children's Centre on a Tuesday morning. You must be nearly at the end. I would love to hear about what you have learnt and how it has made a difference.



Lincolnshire Children's Centres

Give your toddler an incredible start in life

The Incredible Years toddler programme is designed to help you develop your parenting skills and build a positive relationship with your child

Classes and home activities to help you develop parenting skills while strengthening the bond with your baby, to feel safe and secure whilst promoting their language, social and emotional development.

The programme is designed for children aged 1-3 years, and places are limited

To find out more, visit www.lincolnshire.gov.uk/startoflife or scan the QR code

start of life | family hubs LINCOLNSHIRE | LINCOLNSHIRE *Working for a better future*



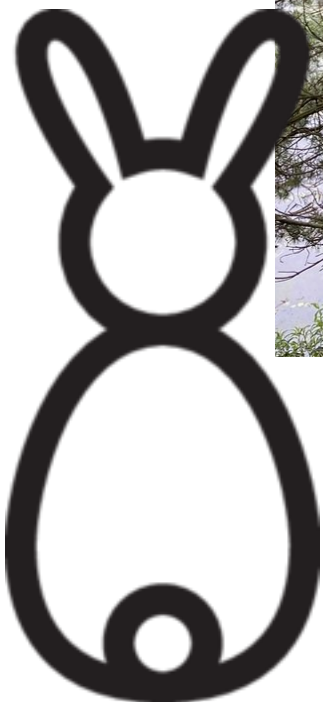
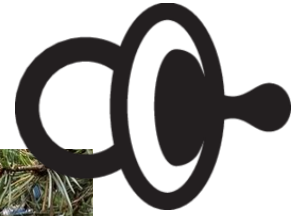
Owl Wings

You may have noticed the new set of owl wings on the front of the school. **James Mayle** from **Image Skool** came back to spray these for the children. Please allow your children to stand in the middle and you can then take a photo of your child with wings. We want all our precious owls to spread their wings and fly!



Dummies

From April 1st we will be creating a Dummy Tree in the entrance. As we ran out of time to do this properly at Christmas. Dummies can really affect your child's speech and language development and ability to chat with you. [Dummies and weaning: How and when to stop dummy use - BBC Tiny Happy People](#)



We want to work with you to help children give up their dummies before Easter. ' **Give You Dummy to the Easter Bunny**'. We will be exchanging dummies for a little wrapped gift. If your child has a collection of dummies they can put them all together on a coloured ribbon which Laura will have in the front office. They children can then choose a wrapped gift.

Funding

Just a reminder that if you are claiming the 15 or 30 hour funding for working families (2-4 year olds) or using Tax-Free Child-care, you will need to reconfirm your eligibility **every 3 months**. You have until **March 31st 2026** to get or renew your code for April 2026.

Childcare Choices

Parents can check whether they could be eligible for a range of government childcare offers, including 15 hours free funding for 2 year old's & 30 hours free funding for 3-4 year old's via Childcare Choices or on the Childcare Calculator at:

www.childcarechoices.gov.uk
www.gov.uk/childcare-calculator

Funded childcare & education - eligibility codes

Age 9-23 months	Age 2 years	Age 3-4 years
Working families*	Eligible families*	All families
Eligibility code to be obtained from www.childcarechoices.gov.uk	Eligibility code to be obtained from www.lincolnshire.gov.uk/2yearolds or from EYE team	Universal offer - No eligibility code required
	Working families*	Working families*
	Eligibility code to be obtained from www.childcarechoices.gov.uk	Eligibility code to be obtained from www.childcarechoices.gov.uk

Lincolnshire COUNTY COUNCIL
Working for a better future

Boston Endeavour Academy



Students from the Boston Endeavour Academy have been helping me to create a Woodland Garden at the front of the school. They have been working really hard along with Tom Houghton and it is looking really fabulous. The children will start to use this space along with the new Dinosaur Garden over the next few weeks.



Sensory Resources

Parents can also borrow sensory resources from Norfolk Lodge Children's Centre. They have a list of items for you to choose from.. Please see the link below.

[Lending Library – Lincolnshire County Council](#)

SEND Coffee Morning

Our next Coffee Morning will be on Friday 27th of March 2026 at 11am.

Ellie the SEND Effectiveness Advisor will be attending with more updates for families. Please come along it will be lovely to see you.



Family Hub

We have been working closely with the Family Hub at Norfolk Lodge [Boston, Norfolk Lodge Children's Centre part of the Family Hubs programme - Find a children's centre – Lincolnshire County Council](#) They have lots of lovely sessions that you can attend with you children and there is no requirement to book you can just turn up! They also have lots of amazing resources that you can take home and play with and then swap for another. These are Borrow Bags They include items like dark dens which you can try with your children at home before purchasing anything.

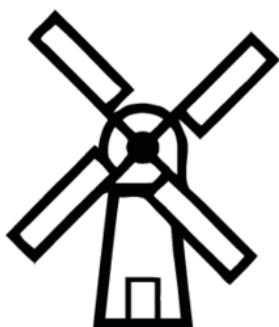
Wellbeing for Parents

The Family Hub at Norfolk Lodge are also sharing well being resources for parents. Below is the link for the Solihull approach- wellbeing for early years parents resources. [Wellbeing for early years parents – new online resources](#)

There is also a free hypnotherapy well-being session for parents

Boston Windmill

We have a beautiful new painting in the Barn Owls Garden. It has been painted by a local artist called Jane Kay. We would love you to stop and talk about it with you children when you come into school. See what you can notice she has added some lovely details. All the parents from Barn Owls are going to be invited to come and paint a bird together on a piece of wood so we can add these to the painting and watch the fly out of the picture onto the wall. Thank you Jane for painting this wonderful picture we will treasure it .



New Surfacing and Equipment

You may have noticed that we have replaced the grass in the Barn Owl garden with special play bark. There is also a new sandpit , boat and reading den. We are now able to use this garden daily whatever the weather which has made such a difference for the children..



Dates for your Diary

Term 4 Monday 23rd February 2026 – Thursday 2nd April 2026

Term 5 Tuesday 21st April 2026 – Friday 22ⁿ^d May 2026

School closed Bank Holiday Monday 4th May

Term 6 Monday 1st June 2026 – Tuesday 21st July 2026

(Nursery closed Monday 20th April 2026 for staff training)



BOSTON
NURSERY SCHOOL

Boston Nursery School
Church Road
Boston
Lincolnshire